



UniFi® | SWITCH

Managed Gigabit Switches with SFP

Models: US-24, US-48

Non-Blocking Throughput Switching Performance

Gigabit Ethernet RJ45 Ports

SFP+/SFP Fiber Connectivity Options



UniFi® SWITCH

Overview

Build and expand your network with Ubiquiti Networks® UniFi® Switch, part of the UniFi line of products.

Available with 24 or 48 RJ45 Gigabit ports, the UniFi Switch is a fully managed Gigabit switch, delivering robust performance and intelligent switching for your growing networks.

Switching Performance

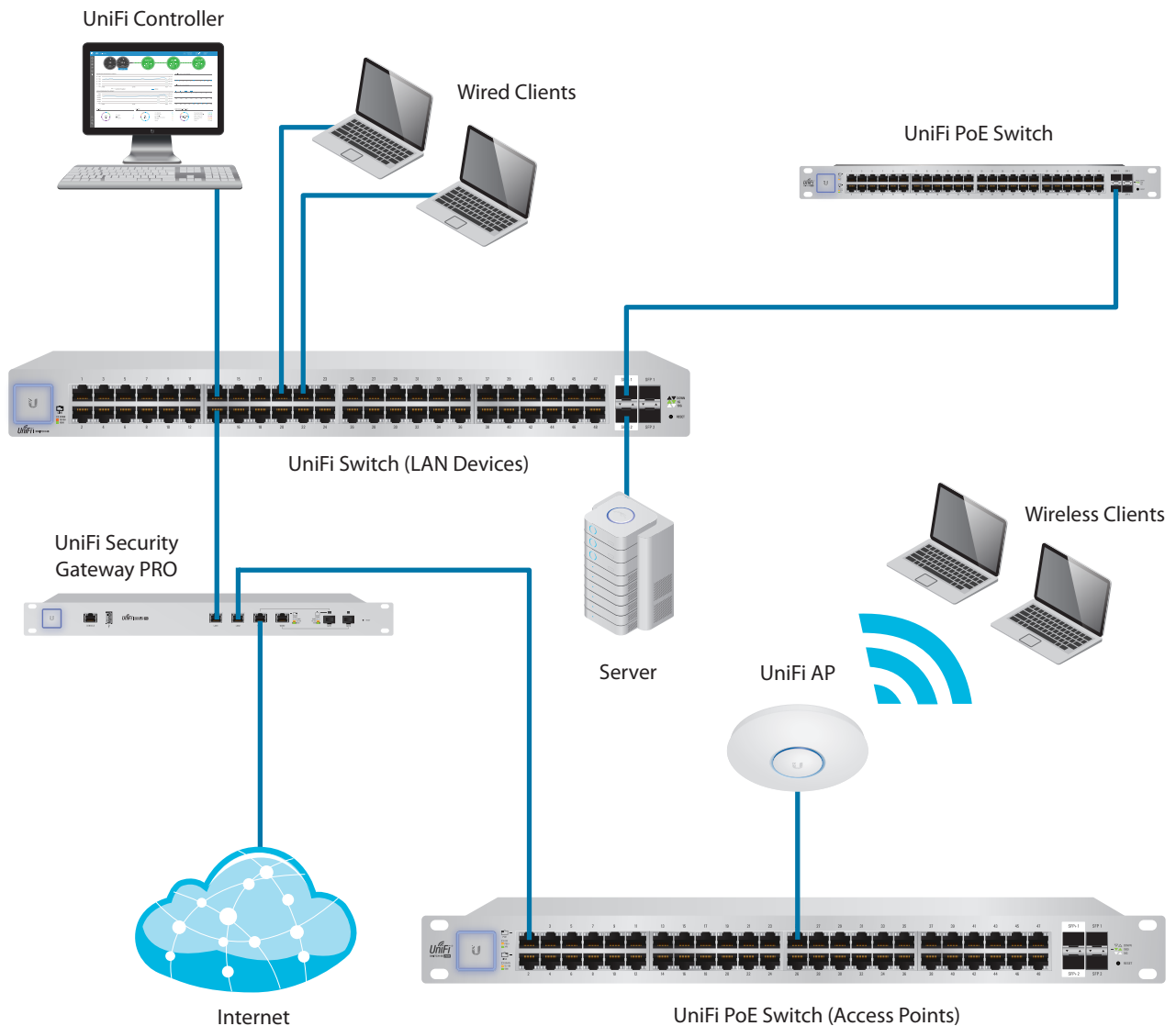
The UniFi Switch offers the forwarding capacity to simultaneously process traffic on all ports at line rate without any packet loss.

For its total, non-blocking throughput, the 24-port model supports up to 26 Gbps, while the 48-port model supports up to 70 Gbps.

Fiber Connectivity

Each model includes two SFP ports for uplinks of up to 1 Gbps.

The 48-port model adds two SFP+ ports for high-capacity uplinks of up to 10 Gbps, so you can directly connect to a high-performance storage server or deploy a long-distance uplink to another switch.



UniFi Controller

Designed for convenient management, the UniFi Controller software allows admins to configure and monitor the UniFi Switch and other UniFi devices using a graphical user interface. You can download it from www.ubnt.com at no extra charge – there is no separate software, licensing, or support fee.

Multi-Site Management

A single instance of the UniFi Controller running in the cloud can manage multiple UniFi sites within a centralized interface. Each site is logically separated and has its own network monitoring, configuration, maps, statistics, and admin accounts.

Switch Configuration

You can access any managed UniFi Switch through the UniFi Controller to configure a variety of features:

- Operation mode (switching, mirroring, or aggregate) per port
- Network/VLAN configuration
- Jumbo frame and flow control services
- Network settings
- Storm control setting per port
- Spanning tree configuration
- 802.1x control and RADIUS VLAN
- Debug terminal option for command-line interface

Switch Port Status

You can also view status information for each port:

- Connection speed and duplex mode
- TX/RX data rates
- Network/VLAN setting



Dashboard

The *Dashboard* tab provides a visual representation of your network's status. Basic information is provided for each network segment.

DEVICE NAME	IP ADDRESS	STATUS	MODEL	VERSION	UPTIME	ACTIONS
Back USG-Pro-4	192.168.1.1	CONNECTED	UniFi Security Gateway 4P	4.3.11.4852827	36:55m 45s	LOCATE RESTART
ABRIS-US-16-150W	192.168.1.233	CONNECTED	UniFi Switch 16 POE 150W	3.5.1.4088	100:18m 45m 7s	LOCATE RESTART
Downstairs US-48-500W	192.168.1.191	CONNECTED	UniFi Switch 48 POE 500W	3.5.1.4088	46:21m 55m 15s	LOCATE RESTART
Workshop US-48	192.168.1.246	CONNECTED	UniFi Switch 48 POE	3.5.1.4088	34:21m 12m 13s	LOCATE RESTART
Back US-48-750W				3.5.1.4088	46:21m 55m 29s	LOCATE RESTART
RecmPanel US-R-150W				3.5.1.4088	16:8m 10m 17s	LOCATE RESTART
AC-Broadcom				3.5.1.4088	46:21m 53m 4s	LOCATE RESTART
AC-LITE				3.6.1.3553	36:21m 17m 32s	LOCATE RESTART
AC-LR-Basement				3.6.1.3553	46:21m 54m 6s	LOCATE RESTART
44e9e77020433		DISCONNECTED		3.6.1.3553	36:21m 1m 32s	LOCATE RESTART
44e9e77020444		DISCONNECTED		3.6.1.3553	36:19m 26m 8s	LOCATE RESTART
AC-Pro-Basement				3.6.1.3553	46:21m 53m 31s	LOCATE RESTART
44e9e779c289		DISCONNECTED		3.6.1.3553	96:17m 59m 44s	LOCATE RESTART
Protopes1 UAP-AC-Pro				3.6.1.3553	16:8m 9m 12s	LOCATE RESTART
AC-Pro-Crawspace				3.6.1.3553	36:21m 17m 14s	LOCATE RESTART
Timeout				3.5.1.4088	16:8m 9m 34s	LOCATE RESTART
Living				3.5.1.4088	16:8m 8m 36s	LOCATE RESTART
Sitting				3.5.1.4088	16:8m 8m 36s	LOCATE RESTART
Master				3.5.1.4088	16:8m 8m 18s	LOCATE RESTART
Loft				3.5.1.4088	16:8m 8m 32s	LOCATE RESTART
Basement				3.5.1.4088	16:8m 8m 25s	LOCATE RESTART
24e4c3e9421e9f				3.5.1.4088	36:17m 22m 54s	LOCATE RESTART
Pro-coast2	192.168.1.164	CONNECTED	UniFi AP-Pro	3.5.1.4088	16:8m 20m 25s	LOCATE RESTART
Pro-coast2	192.168.1.141	CONNECTED	UniFi AP-Pro	3.5.1.4088	36:21m 16m 49s	LOCATE RESTART

Device Configuration

The *Devices* screen displays the UniFi devices discovered by the UniFi Controller. You can access each managed device for device details and configuration.

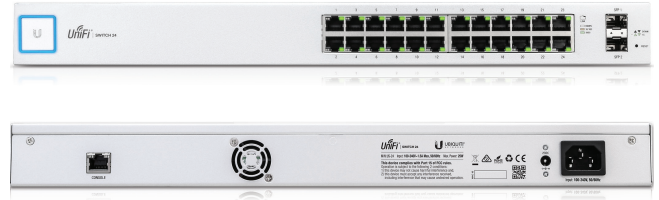


Models

UniFi® SWITCH 24

Model: US-24

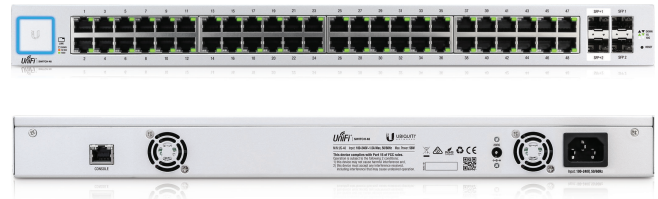
- (24) Gigabit RJ45 Ports
- (2) SFP Ports
- (1) Serial Console Port
- Non-Blocking Throughput: 26 Gbps
- Switching Capacity: 52 Gbps
- Forwarding Rate: 38.69 Mpps
- Maximum Power Consumption: 25W
- Rack-Mountable



UniFi® SWITCH 48

Model: US-48

- (48) Gigabit RJ45 Ports
- (2) SFP+ Ports
- (2) SFP Ports
- (1) Serial Console Port
- Non-Blocking Throughput: 70 Gbps
- Switching Capacity: 140 Gbps
- Forwarding Rate: 104.16 Mpps
- Maximum Power Consumption: 56W
- Rack-Mountable



Model Comparison Chart

	US-8-150W	US-16-150W	US-24	US-24-250W US-24-500W	US-48	US-48-500W US-48-750W
Gigabit RJ45 Ports	8	16	24	24	48	48
SFP Ports	2	2	2	2	2	2
SFP+ Ports					2	2
802.3af/at PoE+	✓	✓		✓		✓
24V Passive PoE	✓	✓		✓		✓
Sound Level	34 dBa (fanless)	34-37 dBa	34-37 dBa	38-47 dBa 40-53 dBa	34-37 dBa	40-47 dBa 40-48 dBa

Hardware Specifications

US-24		
Dimensions	443 x 43 x 221 mm (17.44 x 1.69 x 8.70")	
Weight	Rack-Mount Brackets Excluded	Rack-Mount Brackets Included
	2.51 kg (5.53 lb)	2.60 kg (5.70 lb)
Networking Interfaces	(24) 10/100/1000 Mbps RJ45 Ethernet Ports (2) 1 Gbps SFP Ethernet Ports	
Management Interface	(1) RJ45 Serial Port Out-of-Band, Ethernet In-Band	
Total Non-Blocking Throughput	26 Gbps	
Switching Capacity	52 Gbps	
Forwarding Rate	38.69 Mpps	
Power Method	100-240VAC/50-60 Hz, Universal Input	
Power Supply	AC/DC, Internal, 25W DC	
Max. Power Consumption	25W	
LEDs per Port	Speed/Link/Activity	
Sound Level	Fan Level: 0	Fan Level: 1
	34 dBa	37 dBa
ESD/EMP Protection	Air: ± 24 kV, Contact: ± 24 kV	
Rack Mount	Yes, 1U High	
Shock and Vibration	ETSI300-019-1.4 Standard	
Operating Temperature	-5 to 40° C (23 to 104° F)	
Operating Humidity	5 to 95% Noncondensing	
Certifications	CE, FCC, IC	

Hardware Specifications

US-48		
Dimensions	443 x 43 x 286 mm (17.44 x 1.69 x 11.26")	
Weight	Rack-Mount Brackets Excluded	Rack-Mount Brackets Included
	3.56 kg (7.85 lb)	3.65 kg (8.06 lb)
Networking Interfaces	(48) 10/100/1000 Mbps RJ45 Ethernet Ports (2) 1/10 Gbps SFP+ Ethernet Ports (2) 1 Gbps SFP Ethernet Ports	
Management Interface	(1) RJ45 Serial Port Out-of-Band, Ethernet In-Band	
Total Non-Blocking Throughput	70 Gbps	
Switching Capacity	140 Gbps	
Forwarding Rate	104.16 Mpps	
Power Method	100-240VAC/50-60 Hz, Universal Input	
Power Supply	AC/DC, Internal, 56W DC	
Max. Power Consumption	56W	
LEDs per Port	Speed/Link/Activity	
Sound Level	Fan Level: 0	Fan Level: 1
	34 dBa	37 dBa
ESD/EMP Protection	Air: ± 24 kV, Contact: ± 24 kV	
Rack Mount	Yes, 1U High	
Shock and Vibration	ETSI300-019-1.4 Standard	
Operating Temperature	-5 to 40° C (23 to 104° F)	
Operating Humidity	5 to 95% Noncondensing	
Certifications	CE, FCC, IC	

Specifications are subject to change. Ubiquiti products are sold with a limited warranty described at: www.ubnt.com/support/warranty
 ©2016 Ubiquiti Networks, Inc. All rights reserved. Ubiquiti, Ubiquiti Networks, the Ubiquiti U logo, the Ubiquiti beam logo, and UniFi are trademarks or registered trademarks of Ubiquiti Networks, Inc. in the United States and in other countries. All other trademarks are the property of their respective owners.



www.ubnt.com